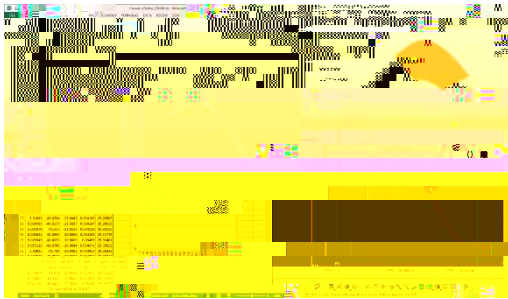


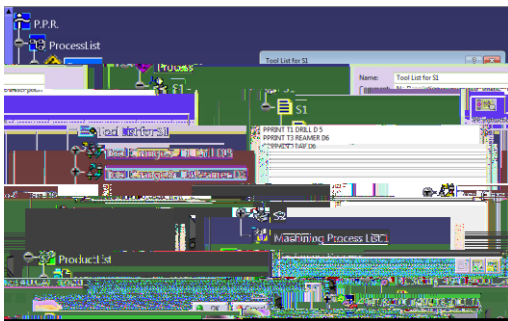
CATIA CURVATURE & RADIUS EXPORT TO EXCEL

CATIA offers a Porcupine Curvature analysis tool, but this tool does not allow you to export the results of the plot. This Inceptra macro allows the user to select a 2D or 3D curve and exports the curvature and radius values to an Excel file, based on a user-defined discretization value.



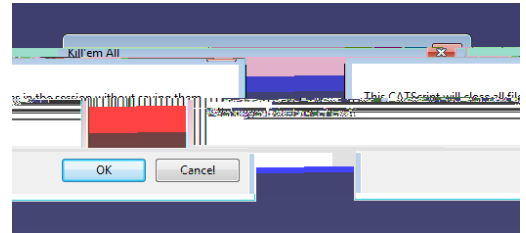
CATIA (NC), TOOL LIST AS PPRWORD

This Inceptra macro collects all the tools used in the machining operations and lists them, in order of use, as a comment (PPRINT) at the beginning of the program.



CATIA CLOSE ALL (WITHOUT SAVING)

This Inceptra macro allows the user to close all active documents (without saving) in one click.



REMOVE REPETITIVE TASKS FOR INCREASED PRODUCTIVITY

Using automated tools is a great way to perform repetitive tasks, which would have taken hours to complete, in minutes.

Often times, engineering calculations are performed and saved as an Excel/CSV file. Trying to represent the data points from the engineering calculation to a point cloud in a CATIA model is a very manual and time consuming process. Inceptra's Points to CSV, CSV to Points Macro will perform the task in minutes no matter how large the data set.

Importing BOM information to ERP systems can be a very manual process. With Inceptra's Drawing Tables to Excel Macro BOM tables on a drawing can be exported to an Excel file, which can be used to import in to ERP system.

COMMUNICATE EFFICIENTLY

Collaborating with customers, vendors & suppliers is a logistically challenging task. Companies in many industries are frequently required to prepare data for transmission. It is a necessary but very time consuming process.

The Inceptra's Renaming Utility can help you dramatically reduce the data preparation time. Through a very intuitive interface, users are able to perform bulk rename and modification of files and properties.

The Inceptra Rename Utility can help if:

- Your company procedure requires exchanging

- CAD data using non-internal part numbers

- You record customers' part numbers, but have your own naming conventions

- You extract data from your own data management system for export

- You are reusing data and your PDM system doesn't support file renaming

MORE TIME FOR DESIGNING

Engineering drawing is a crucial component of product development. Many companies are working towards a "paperless" environment, but it's going to be a while before drawings disappear entirely.

Inceptra's Titleblock Macro Utility greatly reduces repetitive drawing creation &

EFFICIENT STOCK MATERIAL PLANNING

Expand your CATIA functionality to a broader audience.

The ability to calculate bounding box
